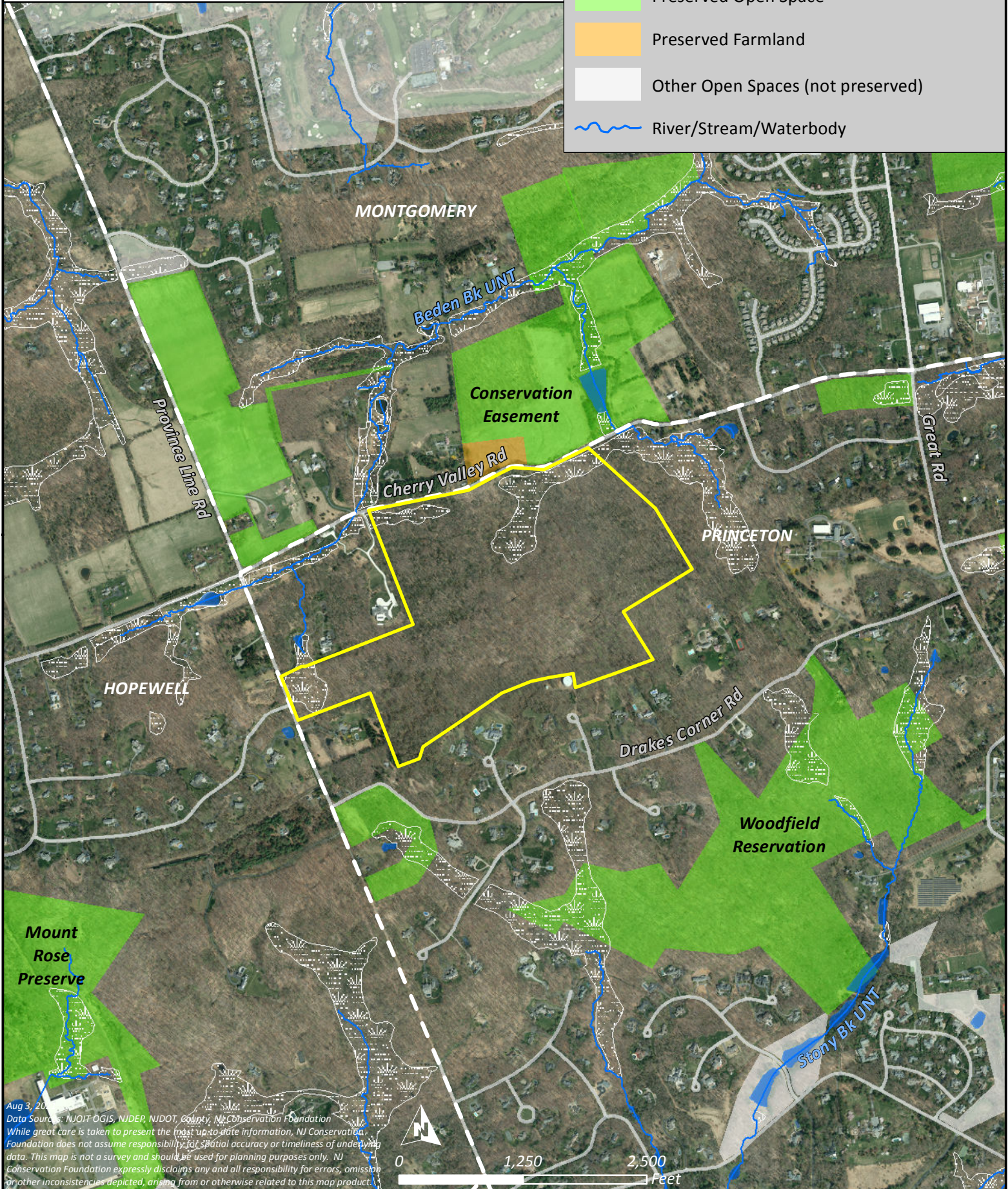




**New Jersey Conservation
FOUNDATION**

Lanwin Development Corp 3
153 +/- acres
Block 102, Lot 6.02
Princeton, Mercer County



Aug 3, 2011
 Data Source: NJOIT GIS, NIDEP, NIDOT, County, NJ Conservation Foundation
 While great care is taken to present the most up-to-date information, NJ Conservation Foundation does not assume responsibility for spatial accuracy or timeliness of underlying data. This map is not a survey and should be used for planning purposes only. NJ Conservation Foundation expressly disclaims any and all responsibility for errors, omission or other inconsistencies depicted, arising from or otherwise related to this map product.